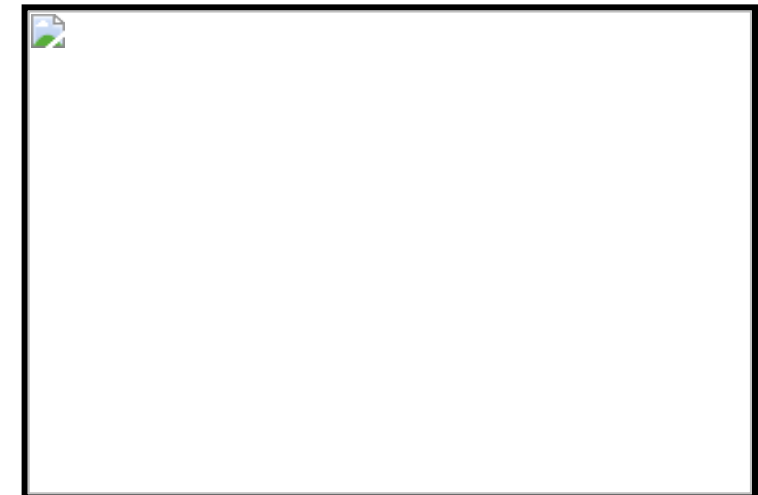
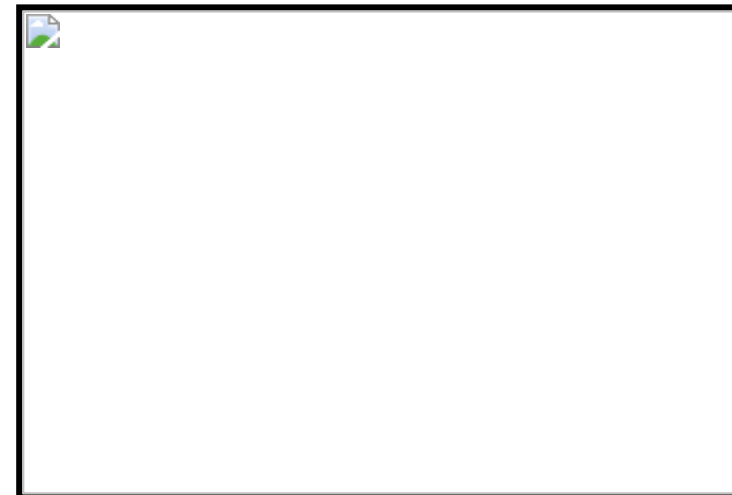
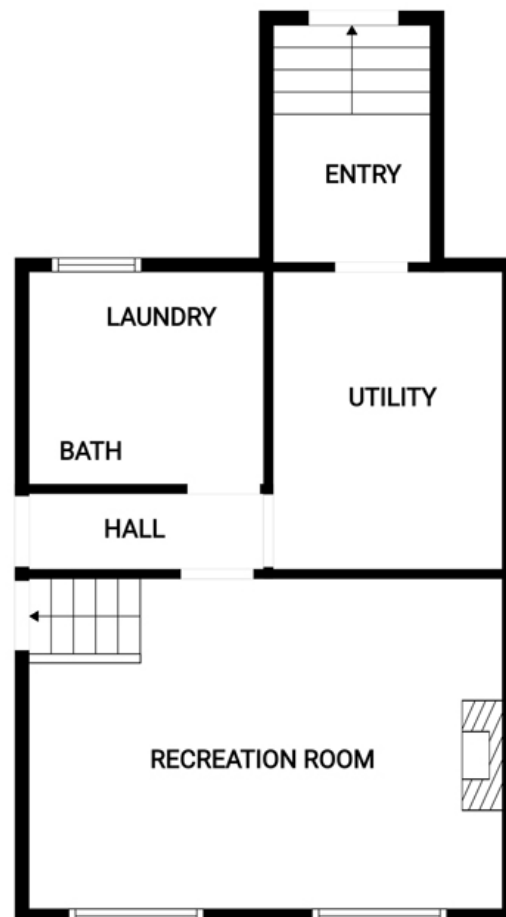
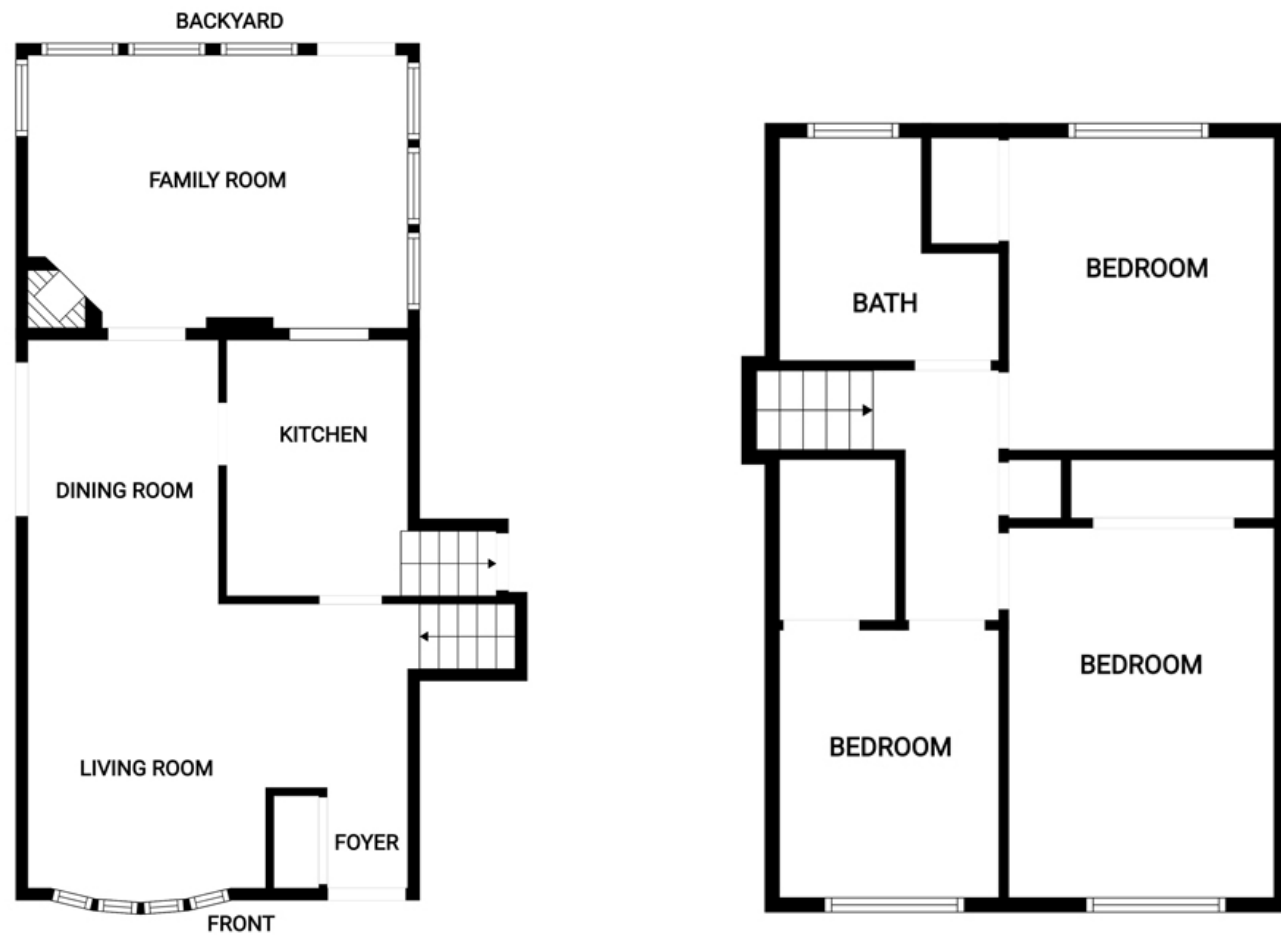


123 Woodman Drive, Hamilton

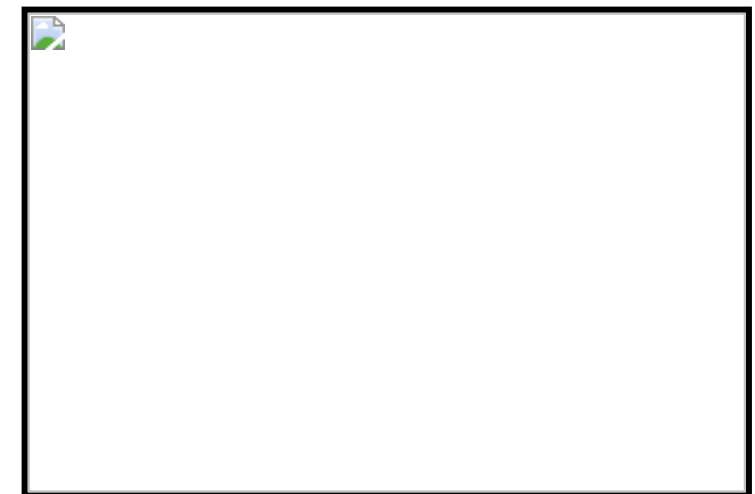
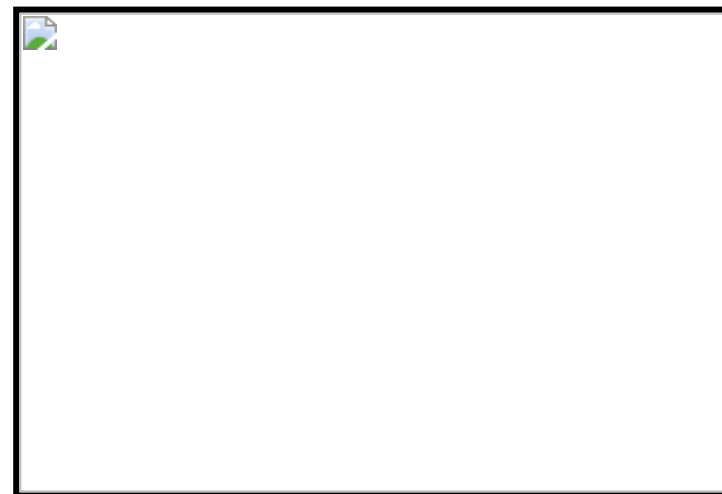
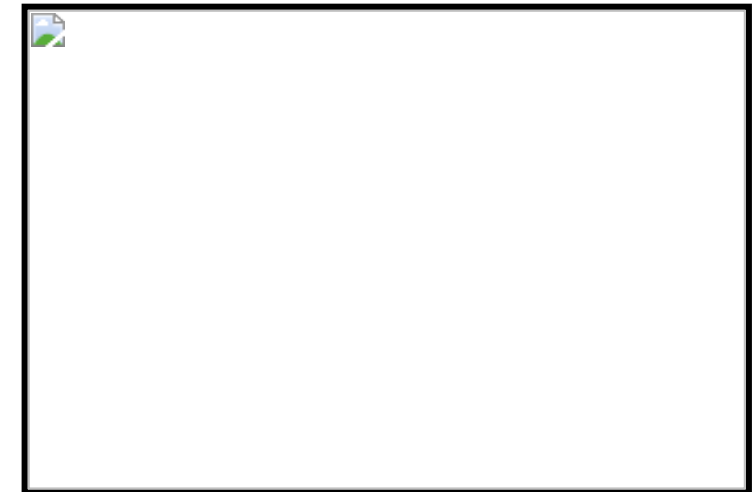


Allyson Slater
Broker of Record
905.639.3355 |

Coldwell Banker Burnhill Realty Brokerage
296 Dundas Street E. | Waterdown



123 Woodman Drive, Hamilton



Above Grade Square Footage: 1240 sqft
(115.20m²)

Below Grade Finished Space: 310 sqft (28.80m²)
Lower Unfinished & Crawl Space: 500

Main Level

Living Room 13' x 10'10 (3.96m x 3.30m)

Dining Room 16'9 x 8'4 (5.11m x 2.54m)

Foyer 13' x 6'3 (3.96m x 1.91m)

Kitchen 11'3 x 8'4 (3.43m x 2.54m)

Family Room 16'4 x 11'6 (4.98m x 3.51m)

Upper Level

Bedroom 13'2 x 9'6 (4.01m x 2.90m)

Bedroom 9'9 x 8' (2.97m x 2.44m)

Bedroom 11'5 x 9'6 (3.48m x 2.90m)

Bathroom 4P 8'2 x 7'6 (2.49m x 2.29m)

Lower Level

Rec Room 16'10 x 12'6 (5.13m x 3.81m)

Laundry - Bath 8'4 x 7'4 (2.54m x 2.24m)

Utility - Storage 11'4 x 8' (3.45m x 2.44m)

Crawl Space 17' x 24' (5.18m x 7.32m)